

# Updating your BTECH DMR-6X2

To better understand the process, please read through all the steps before beginning the update. Also, please be sure that your BTECH radio's battery is sufficiently charged before you begin.

## Very Important First Step

1. Launch your currently installed BTECH CPS software and **backup your existing codeplug** to a file on your computer
  - The following updates will **erase the contents** of your BTECH radio.
2. **Verify** that your codeplug backup file is saved and stored in a known, safe location

## Installing the Latest Software

3. Extract the update package to any folder on your computer
  - **DMR-6X2-203.zip**
4. Launch the installer for the USB Virtual Com Port Driver included in the package
  - **USB Virtual Com Port Driver.exe**
  - Located in the **USB Drivers** subfolder of the package
  - Use the **x64** version for 64-bit systems
  - Use the **x86** version for 32-bit systems
5. Launch the CPS 2.03 installer included in the package
  - **DMR\_6X2\_Setup\_2.03N.exe**
  - Install to C:\DMR\_6X2\_2.03N\ or choose another location

Please proceed with the Firmware update procedure below

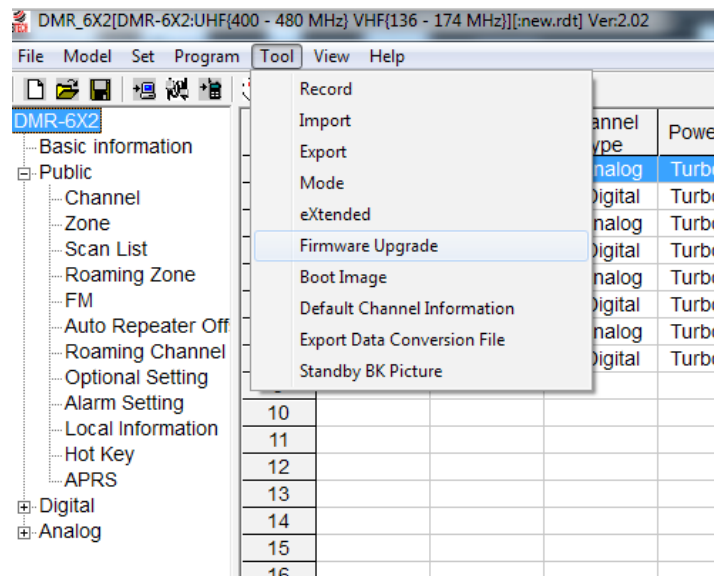
## Updating the BTECH DMR-6X2 Firmware

6. Turn off your BTECH radio
7. Press and hold both of the following buttons
  - Push To Talk (PTT) button
  - Alarm button (orange button above display)
8. Turn on your BTECH radio
  - The LED will blink red to indicate that your radio is in update mode
  - Release the PTT and Alarm buttons
9. Connect your radio to the computer using the USB cable

- Ensure that the cable is firmly connected to both the computer and your radio

10. Launch the Firmware Update application

- **From the toolbar of the Installed CPS (2.03) select Tool < Firmware Upgrade**
  - i. *You may need to run the CPS as your computer administrator to launch the firmware upgrade tool*



- **Alternate Firmware Update Tool**  
**Launch Method:** You can launch the firmware upgrade tool directly from your root CPS installed folder (example: *C:\DMR\_6X2\_2.03N\Update\Firmware\_Update*)

11. Click the "Open Update File" button

12. Browse to the new firmware file

- **DMR\_6x2\_V2.03\_2020-07-03.spi**
- Located in the **DMR\_6X2 Firmware Update 2.03** subfolder of the package

13. Click Open

- File opened successfully message will be displayed
- Click OK

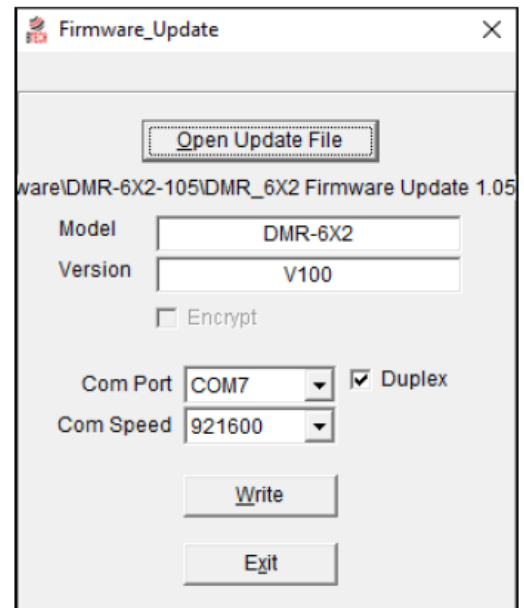
14. Select the communications settings

- Choose the Com Port assigned to the USB Virtual Com Port Driver. *If the COM port is not available, check that your radio is connected to your computer*
- Choose the Com Speed
- Default is 921600
- Enable Duplex

15. Click Write

- The updated firmware will be applied to your BTECH radio
- Upon completion of the update, your radio will reboot

*If your radio shows the Clock Set screen at this point, the update may not have succeeded. Please retry the update procedure beginning at Step 6, carefully following each step in order. As always, please feel free to reach out to our Technical Support team if you have any questions or issues.*



*Firmware update using the QX\_Firmware\_Update application*

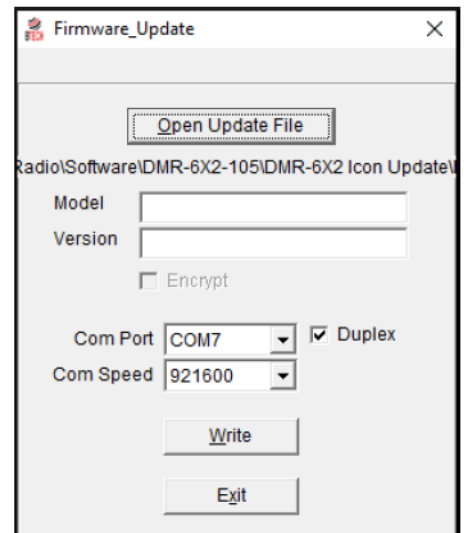
**Please leave the Firmware Update application running and proceed with the Icon Update procedure below (Icon update not required if previously upgraded to the current Icon Update)**

**A MCU Update is required after a firmware update, see “Resetting the Main Control Unit (MCU)” below on this procedure**

## Updating the BTECH DMR-6X2 Icons

(Icon update not required if previously upgraded to the current Icon Update)

16. Turn off your BTECH radio
17. Press and hold both of the following buttons
  - Push To Talk (PTT) button
  - PF2 key (the lower key on the left side of your radio)
18. Turn on your BTECH radio
  - The display will show “UPDATE MODE”
  - Release the PTT and PF2 buttons
19. Connect your radio to the computer using the USB cable
  - Ensure that the cable is firmly connected to both the computer and your radio
20. Using the Firmware Update application launched in Step 10 above
21. Click the “Open Update File” button
22. Browse to the new Icon file
  - **DMR\_6X2\_PIC\_V1.1b.spi**
  - Located in the **DMR-6X2 Icon Update** subfolder of the package
23. Click Open
  - File opened successfully message will be displayed
  - Click OK
24. Select the communications settings
  - Choose the Com Port assigned to the USB Virtual Com Port Driver.  
  
If the COM port is not available, check that your radio is connected to your computer
  - Choose the Com Speed  
Default is 921600
  - Enable Duplex
25. Click Write
  - The updated Icons will be installed to your BTECH radio
  - Upon completion of the update, your radio will reboot



*Icon Update using the  
QX\_Firmware\_Update application*

Please continue to Resetting the Main Control Unit (MCU) below

## Resetting the Main Control Unit (MCU)

26. Turn off your BTECH radio
27. Press and hold both of the following buttons
  - Push To Talk (PTT) button
  - PF1 key (the key below the PTT button on the left side of your radio)
28. Turn on your BTECH radio
  - The display will show “Are you sure you want to Initialize radio?”
  - Release the PTT and PF1 buttons, Press the “\_” (above the P1 button) to Confirm
  - **Please wait** - do not interrupt the process
  - Upon completion of the reset, your radio will reboot
29. When prompted, set the date and time
  - Use the P1 key to navigate the date / time fields
  - Use the Up / Down keys to change the values in the fields
  - The date format is DD-MM-YYYY
  - Use the Green key to save the date / time settings
30. Launch the new version of CPS (1.06), and open the backup of your codeplug created in Step 1
31. Rewrite your original codeplug to your radio

Congratulations! You have finished updating your DMR-6X2.

We sincerely hope you have an enjoyable experience with your BTECH radio.

Please let us know if you experience any issues with the new firmware; you can earn a reward via our new “bug bounty” program!

73,

BTECH